



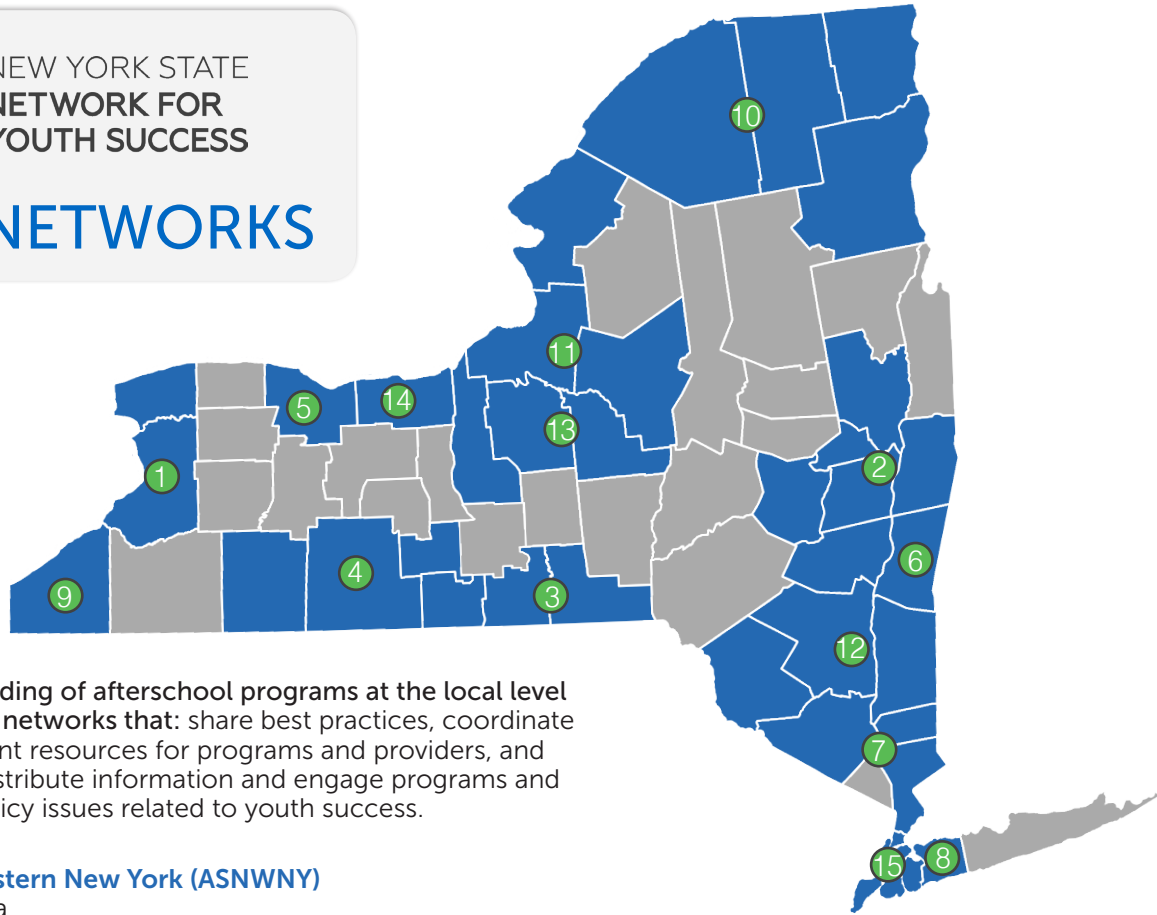
NEW YORK STATE
NETWORK FOR
YOUTH SUCCESS

REGIONAL NETWORKS



GET ON THE MAP

You're invited to join the network in your region. Or, contact us for support in starting one in your area!



We support the capacity-building of afterschool programs at the local level through regional afterschool networks that: share best practices, coordinate local professional development resources for programs and providers, and provide effective means to distribute information and engage programs and parents on state and local policy issues related to youth success.

1 After-School Network of Western New York (ASNWNY)

Counties Served: Erie, Niagara
Contact: buffaloafterschool@gmail.com

2 The Capital Region Expanded Learning Opportunities (CRELO)

Counties Served: Albany, Rensselaer, Saratoga, Greene, Schenectady, Schoharie
Contact: andrewk@albanyjcc.org, jbulmer@bgcalbany.com

3 Expanded Learning Network of Broome and Tioga

Counties Served: Broome, Tioga
Contact: jm62@cornell.edu

4 Expanded Learning Network of the Southern Tier (ELNoST)

Counties Served: Chemung, Schuyler, Steuben, Allegany
Contact: chairperson@elno.org, addisonyouthcenter@yahoo.com

5 Greater Rochester After-School Alliance (GRASA)

County Served: Monroe
Contact: cdandino@racf.org

6 H.O.S.T (Hudson Out-of-School Time) Collaborative

County Served: Columbia
Contact: jhunt@mhacg.org

7 Hudson Valley Afterschool Network (HVAN)

Counties Served: Orange, Westchester, Putnam
Contact: ncc_jim@yahoo.com

8 Nassau Coalition of Youth Service Agencies (NCoYSA)

County Served: Nassau
Contact: kelly@networkforyouthsuccess.org

9 Chautauqua Out-of-School Time (COST)

County Served: Chautauqua
Contact: shane.a.monroe@jpsny.org

10 North Country Afterschool Network (NCAN)

County Served: Jefferson, St. Lawrence, Clinton, Franklin, Essex
Contact: cccouncil@primelink1.net

11 Oswego Out-of-School Time Network

County Served: Oswego, Cayuga
Contact: jkennedy@oco.org

12 Dyson Network (Mid Hudson Region)

County Served: Dutchess, Ulster, Sullivan
Contact: jemmons@frostvalley.org

13 Syracuse Out-of-School Time Network

County Served: Onondaga, Oneida, Madison
Contact: beth.henderson@dfa.state.ny.us

14 Maximizing Out-of-School Time (MOST)

County Served: Wayne
Contact: jroscup@lyonscsd.org

15 New York City Networks

Areas Represented: Bronx, Brooklyn, Manhattan, Queens, Staten Island

Partnering Organizations

Expanded Schools (Formerly TASC)
The New York City Dept. of Education (DOE)
Partnership for After School Education (PASE)
Dept. of Youth & Community Development (DYCD)
Police Athletic League (PAL)
Children's Aid
Good Shepherd

JOIN OR START A NETWORK!

Contact: Kelly Malone Sturgis
518.694.0660
Kelly@networkforyouthsuccess.org